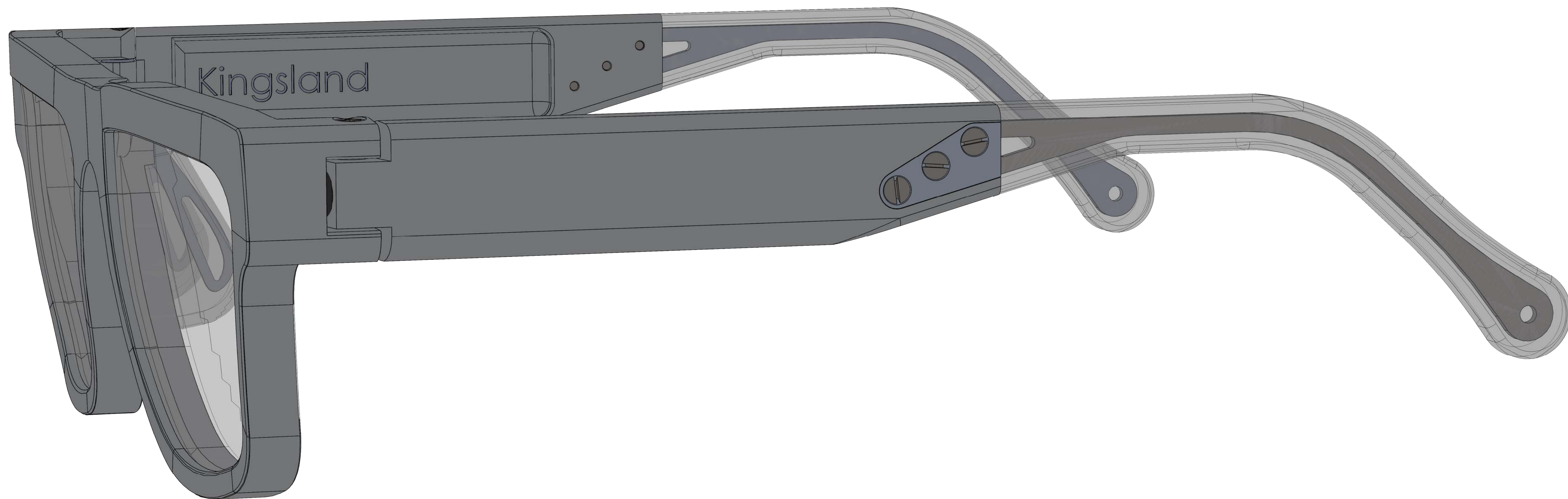
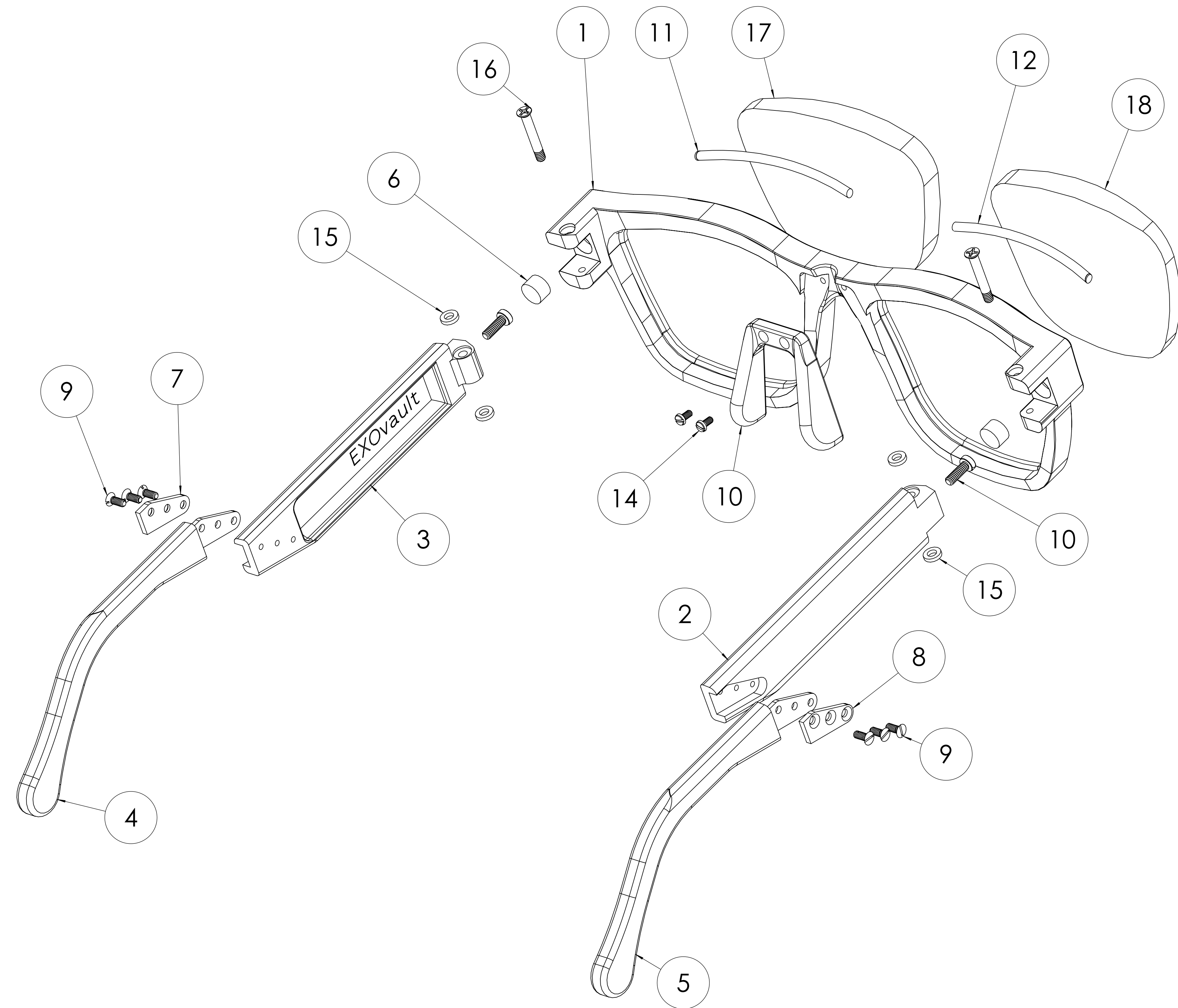


Machined Aluminum

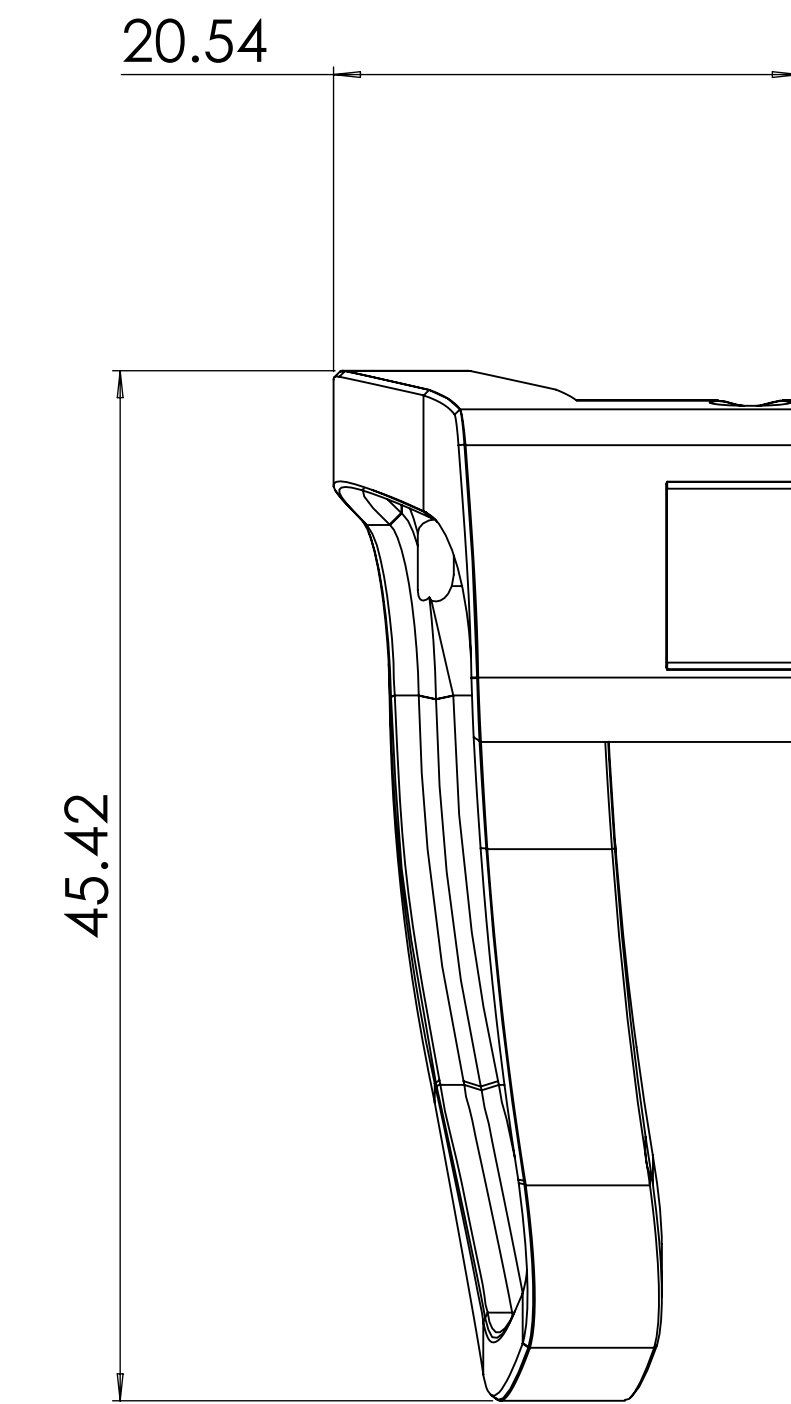
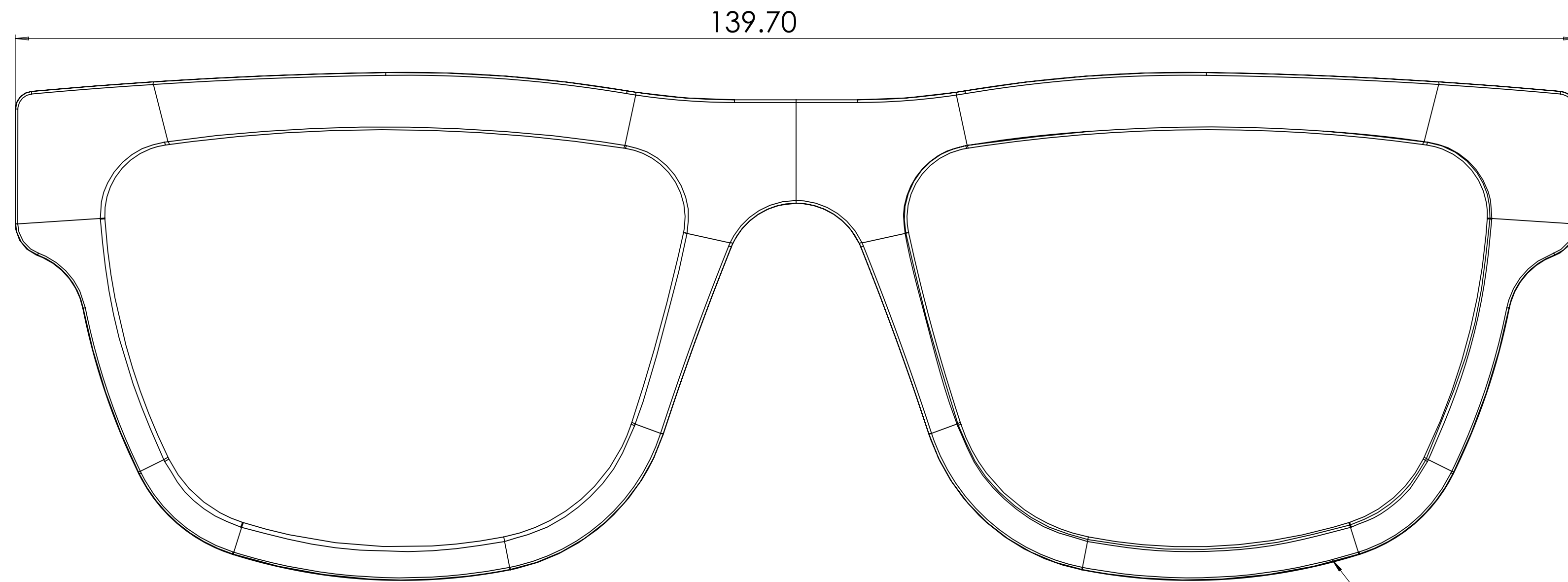
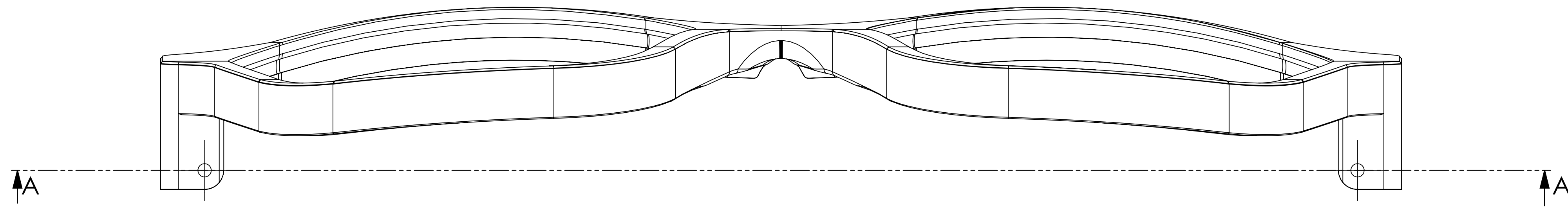
Four Finishes  
3D surfaced  
Silicone Temple Ends

Kingsland

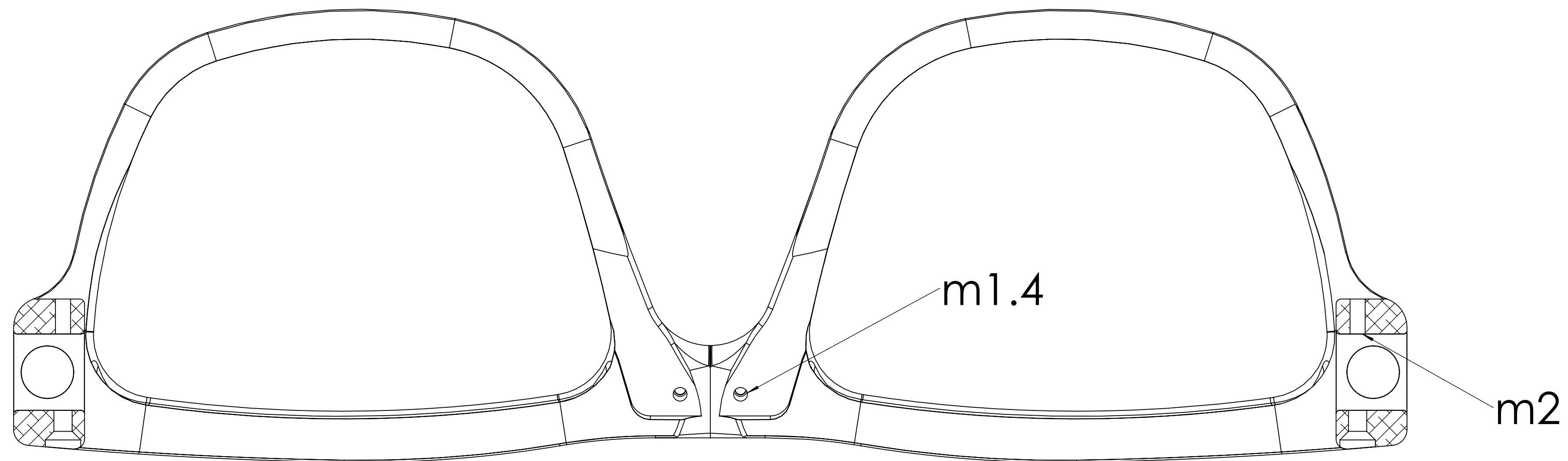




| ITEM NO. | SW-File Name (File Name)                        | Material       | QTY. | Notes                |
|----------|---|----------------|------|----------------------|
| 1        | Kingsland - Frame v0.2                          | 6061-T6 (SS)   | 1    |                      |
| 2        | Kingsland - Right Temple Long v0.3              | 6061-T6 (SS)   | 1    |                      |
| 3        | Kingsland - Left Temple long v0.3               | 6061-T6 (SS)   | 1    |                      |
| 4        | Kingsland - Left Temple End                     |                | 1    |                      |
| 4.1      | Kingsland - Left Temple end silicone            | Silicon        | 1    |                      |
| 4.2      | Kingsland - Left Temple end inner metal         | AISI 304       | 1    |                      |
| 5        | Kingsland - Right Kingsland Temple End          |                | 1    |                      |
| 5.1      | Kingsland - Right Kingsland Temple end silicone | Silicon        | 1    |                      |
| 5.2      | Kingsland - Right Temple end inner metal        | AISI 304       | 1    |                      |
| 6        | Kingsland - Rubber temple bumper                | Silicon Rubber | 2    |                      |
| 7        | Kingsland - Left Temple end connection plate    | 6061-T6 (SS)   | 1    |                      |
| 8        | Kingsland - Right Temple end connection plate   | 6061-T6 (SS)   | 1    |                      |
| 9        | FLAT HEAD SLOTTED MACHINE SCREW m1.6 x 4        | AISI 304       | 6    |                      |
| 10       | Kingsland - Temple adjustment screw m2          | AISI 304       | 2    |                      |
| 11       | Kingsland - Rubber frame lens mount             | Silicon Rubber | 1    |                      |
| 12       | MirrorKingsland - Rubber frame lens mount       | Silicon Rubber | 1    |                      |
| 11       | Kingsland - Nose Pad                            |                | 1    |                      |
| 13.1     | Nose pad - metal core                           |                | 1    |                      |
| 13.2     | Nose pad -silicone                              |                | 1    |                      |
| 14       | Kingsland - Nose Pad Screw m1.4 x 0.3 x 3mm     | AISI 304       | 2    |                      |
| 15       | Kingsland - Nylon washer 5610-221-325           | Nylon 101      | 4    | Supplied by EXOVault |
| 16       | Kingsland - Temple screw m2 x 0.4mm             | AISI 304       | 2    | Supplied by EXOVault |
| 17       | Kingsland - Left 6d lens                        |                | 1    | Supplied by EXOVault |
| 18       | Kingsland - Right 6d lens                       |                | 1    | Supplied by EXOVault |



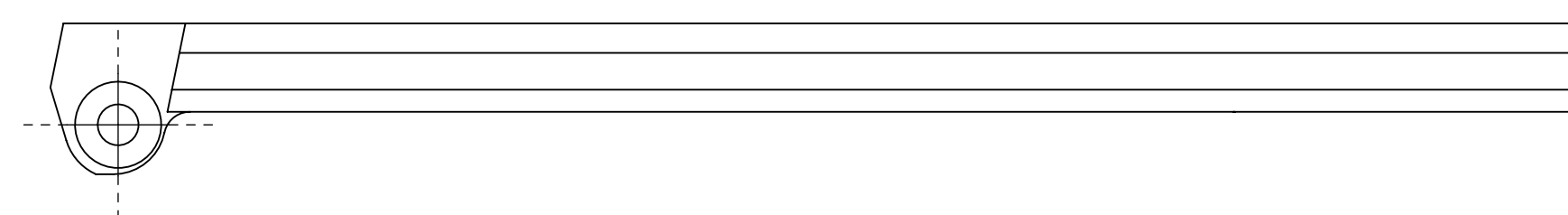
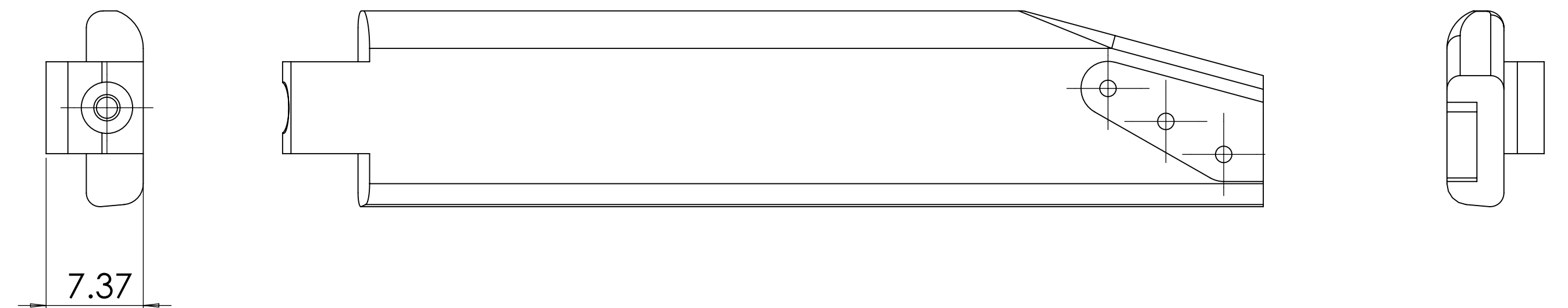
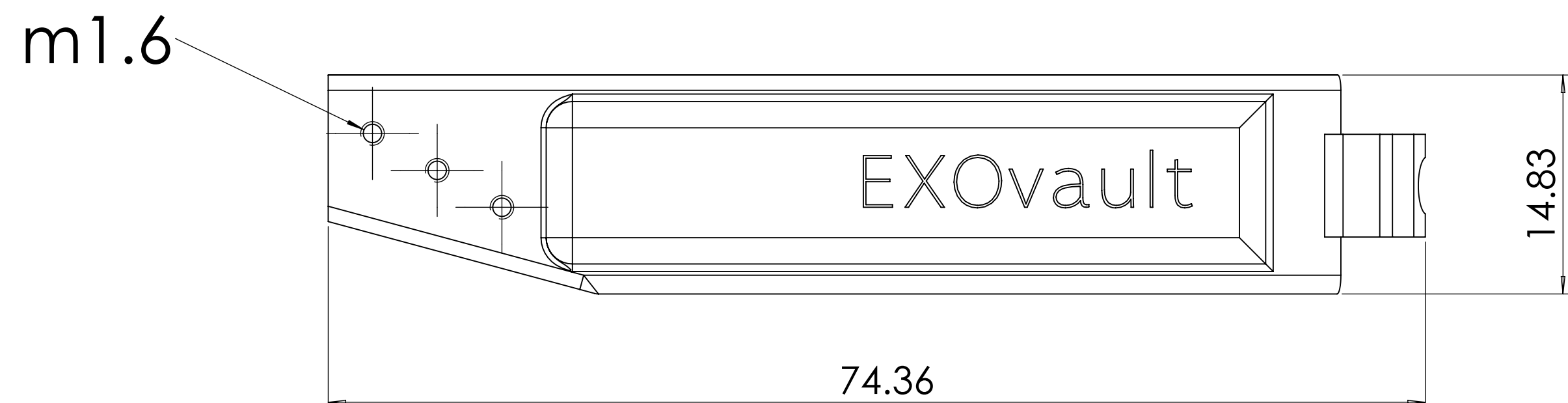
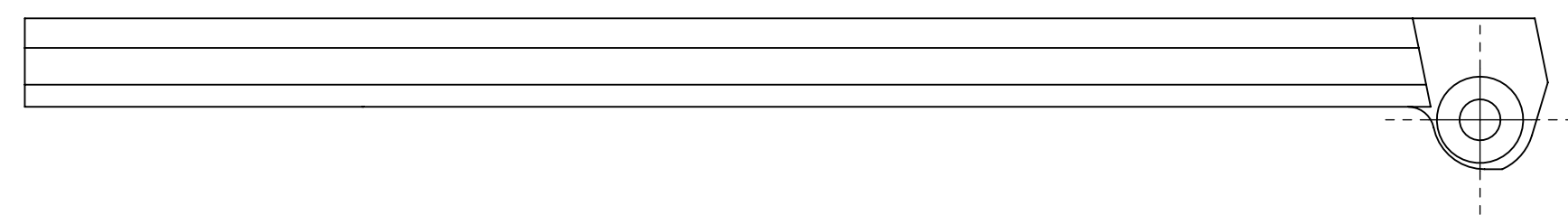
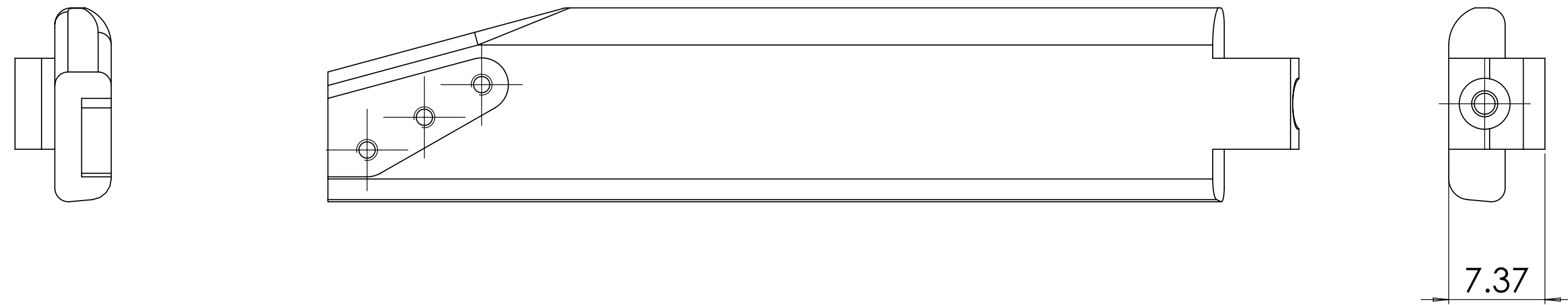
All edges chamfered

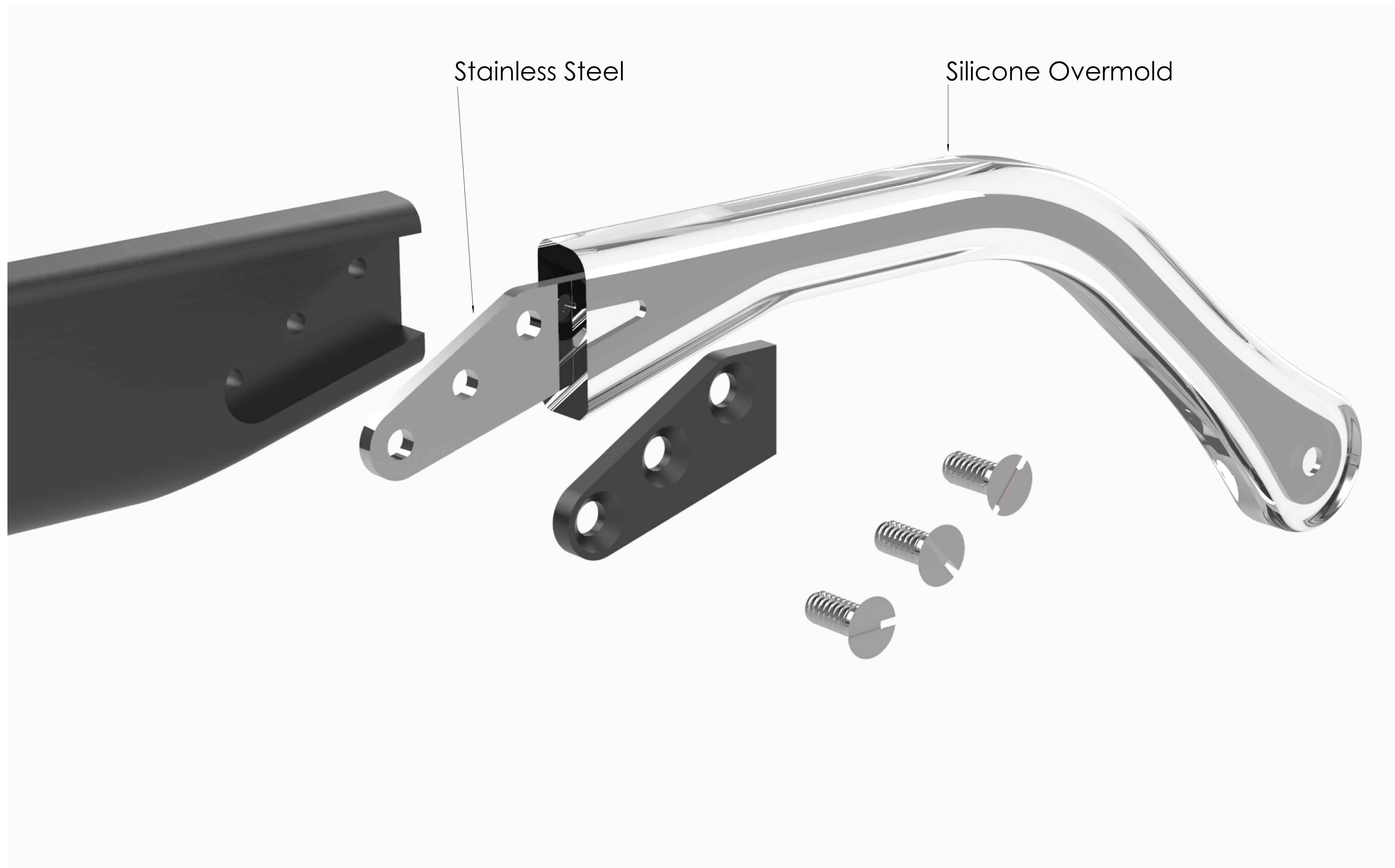


SECTION A-A  
SCALE 3:1

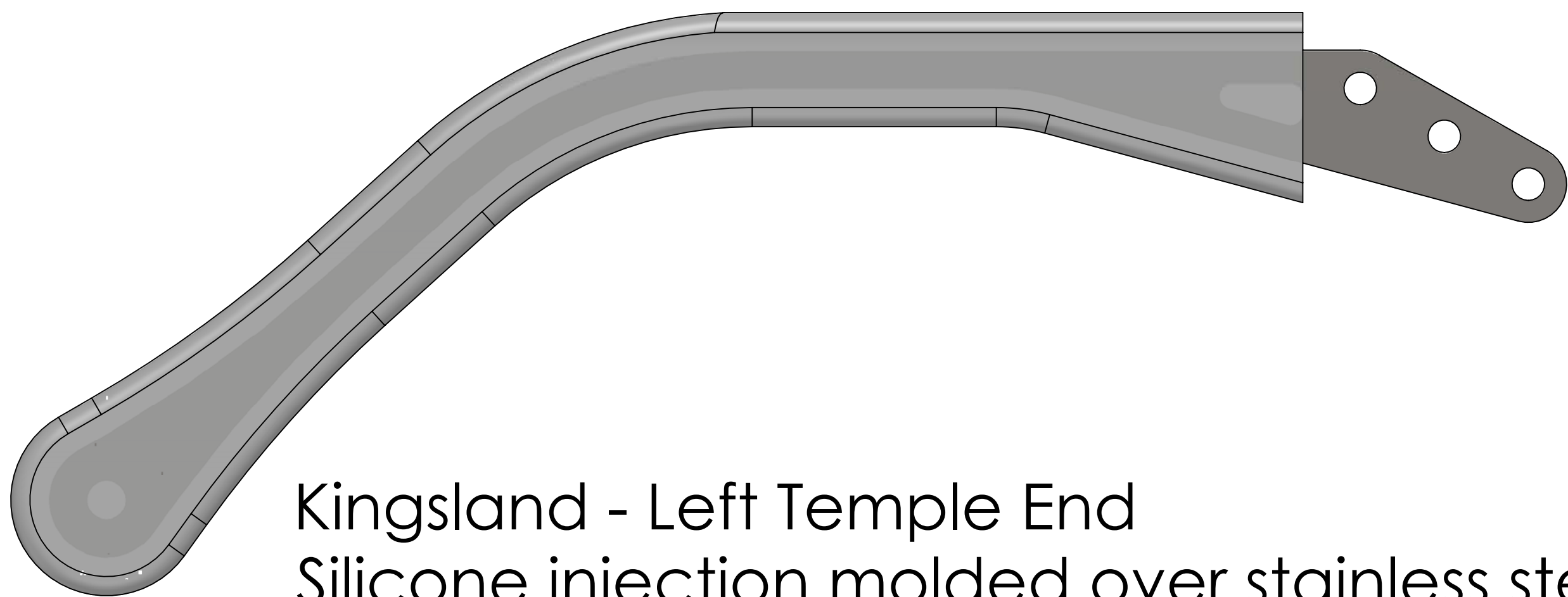
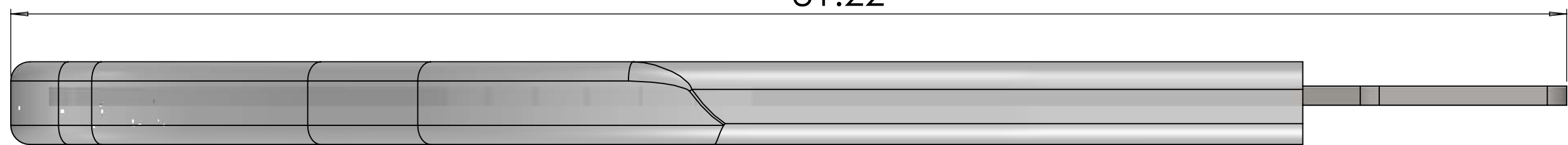
Machined from solid 6061 aluminum.  
Kingsland Frame v0.2

Kingsland

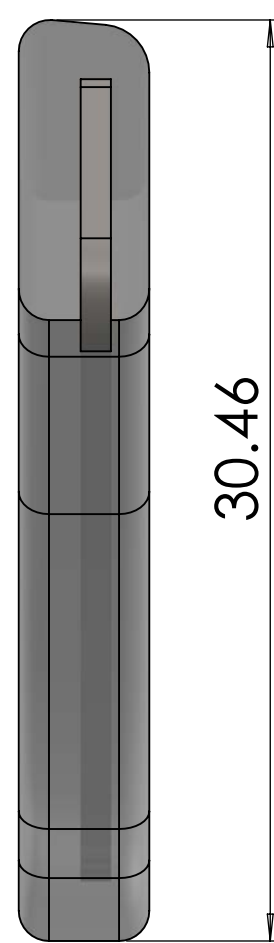




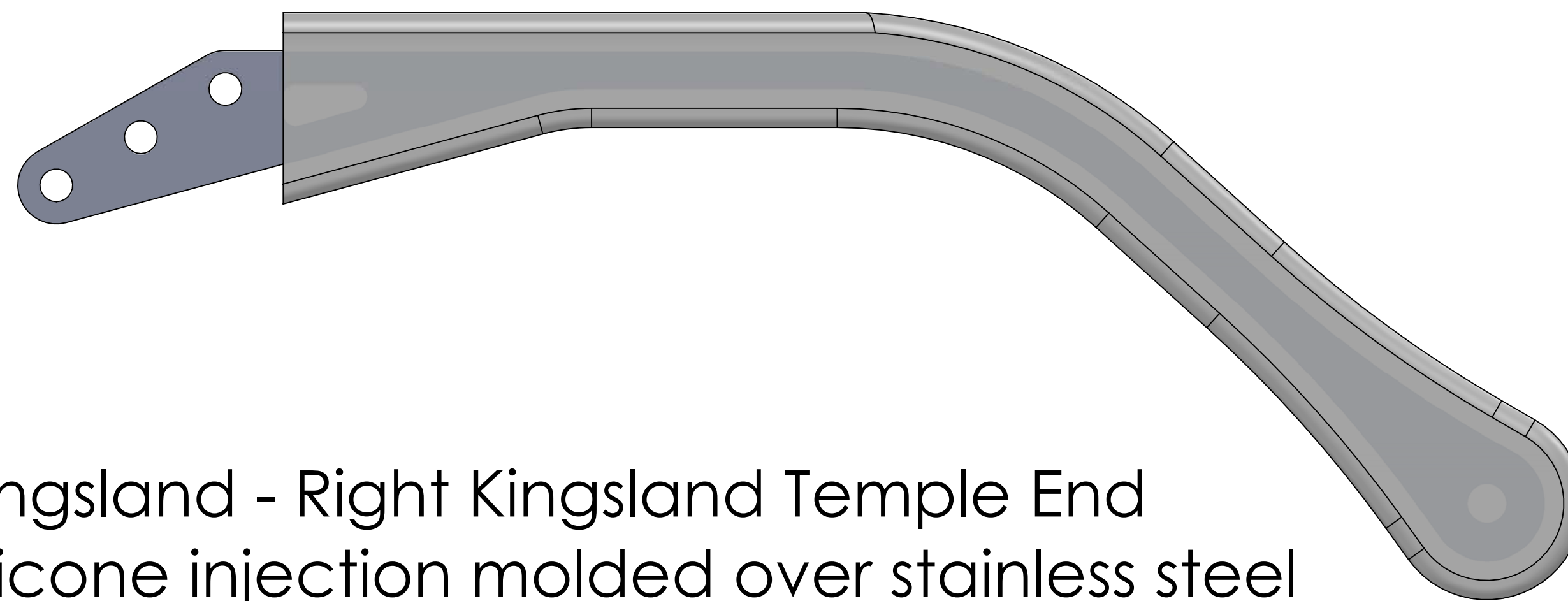
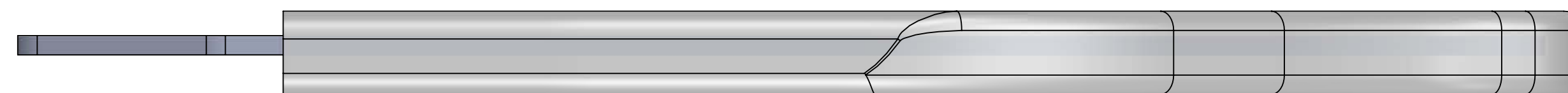
81.22



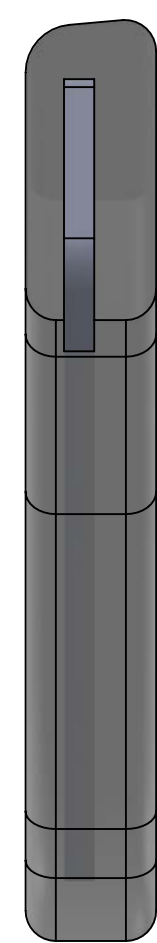
Kingsland - Left Temple End  
Silicone injection molded over stainless steel



30.46

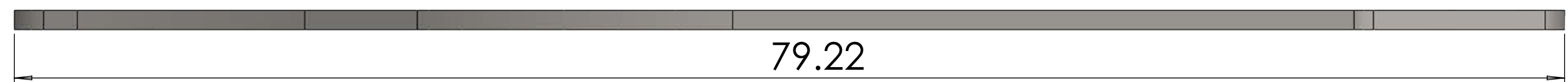


Kingsland - Right Kingsland Temple End  
Silicone injection molded over stainless steel

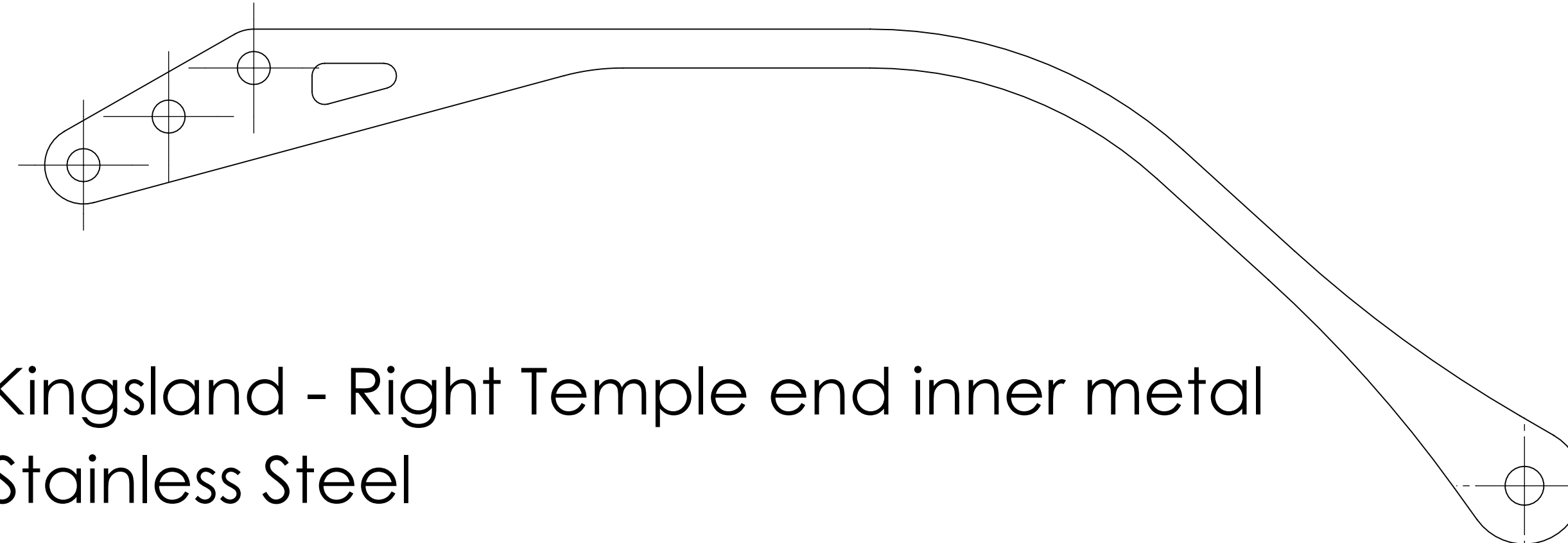
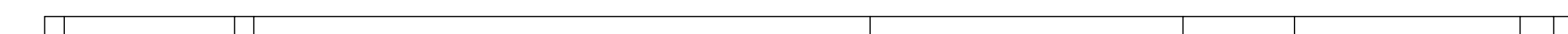
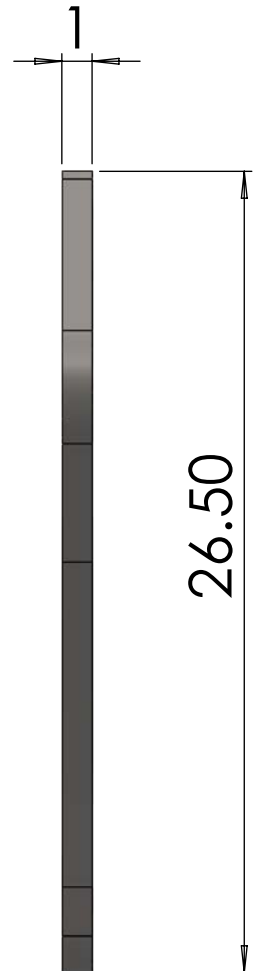


26.50

79.22

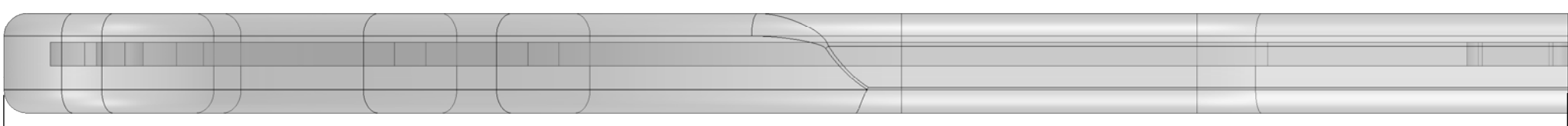


Kingsland - Left Temple end inner metal  
Stainless Steel

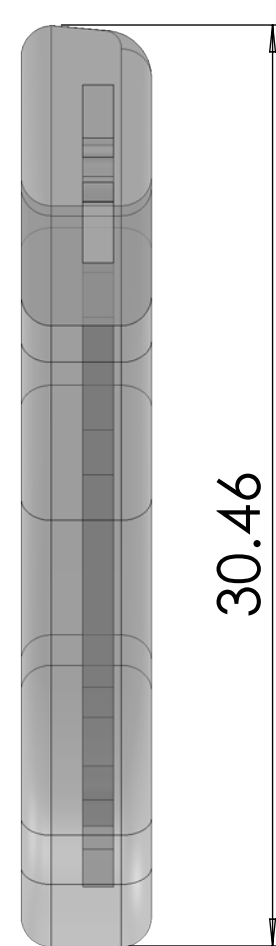


Kingsland - Right Temple end inner metal  
Stainless Steel

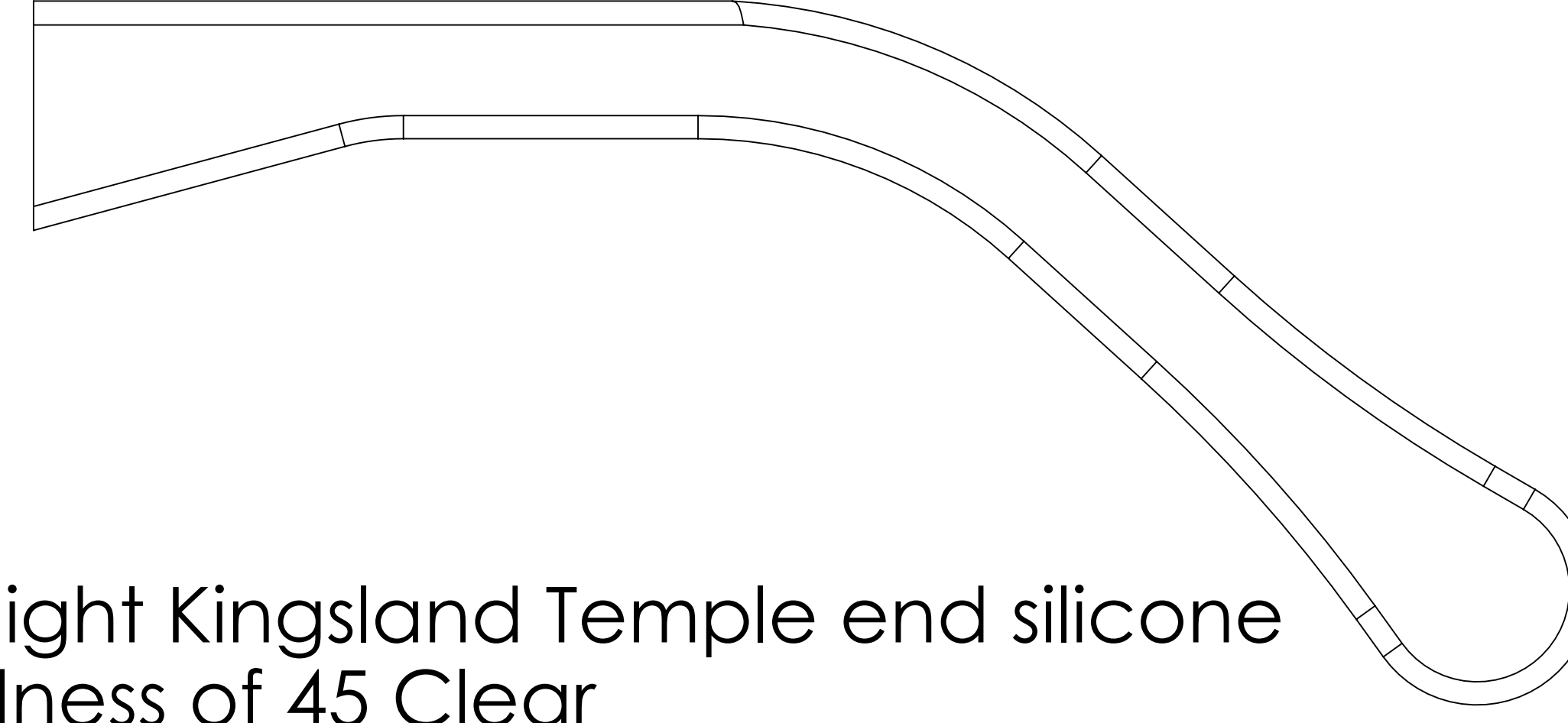
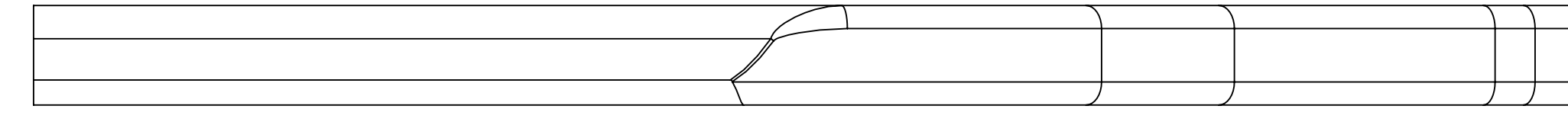
67.45



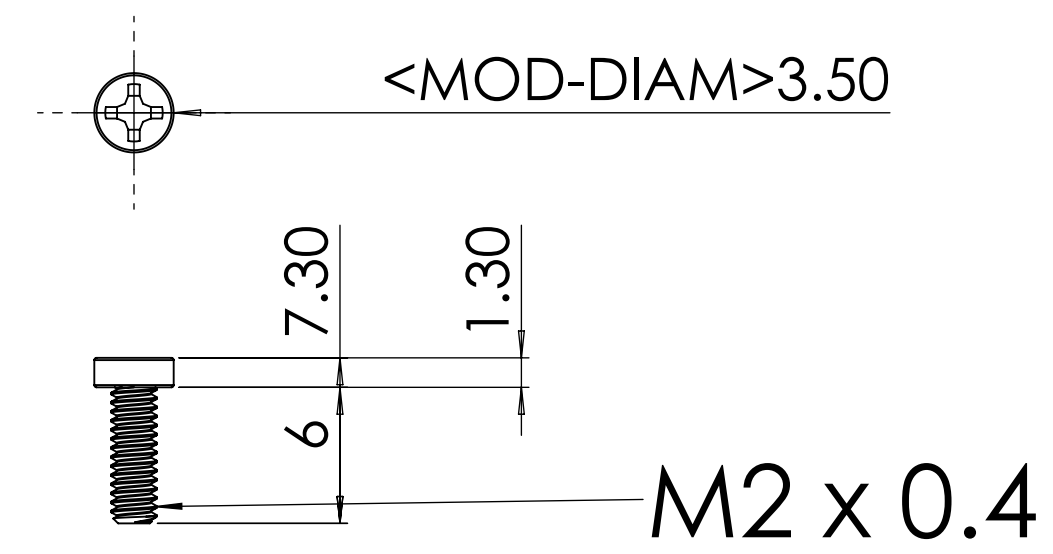
Kingsland - Left Temple end silicone  
Shore A hardness of 45 Clear



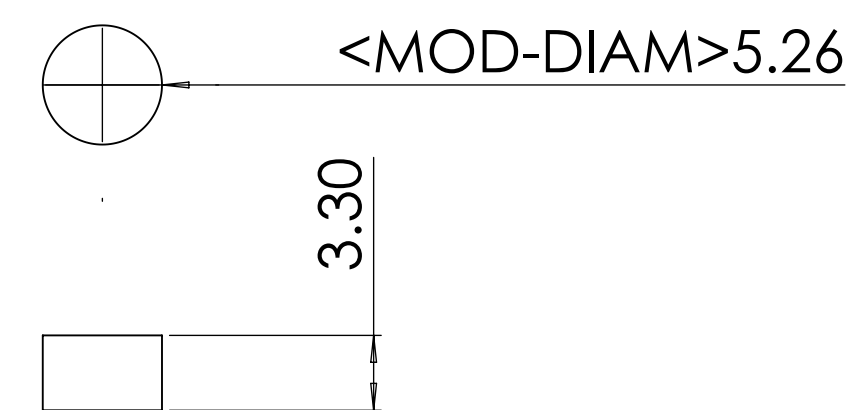
30.46



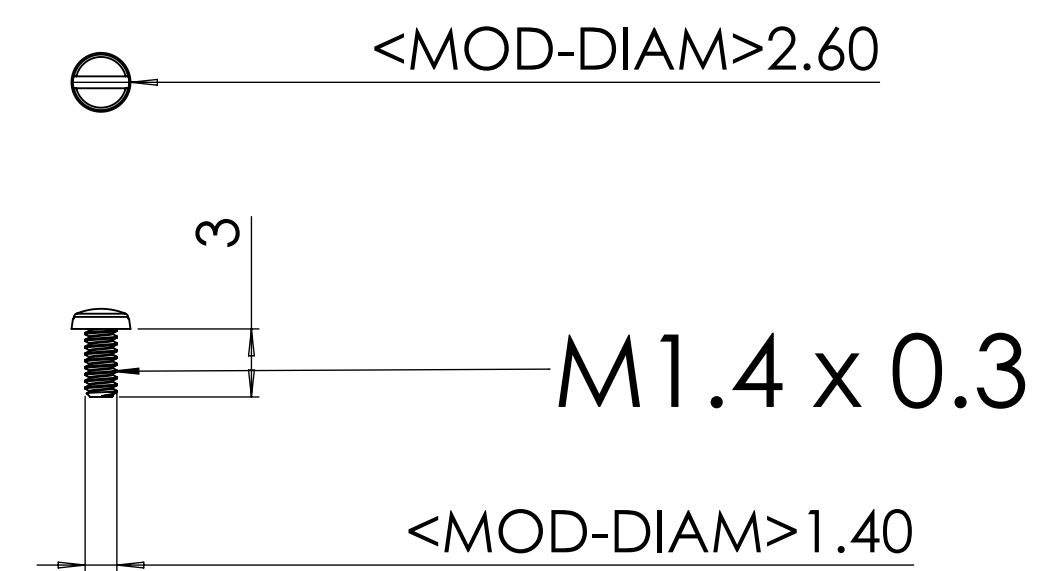
Kingsland - Right Kingsland Temple end silicone  
Shore A hardness of 45 Clear



Kingsland - Temple adjustment screw m2  
Stainless Steel

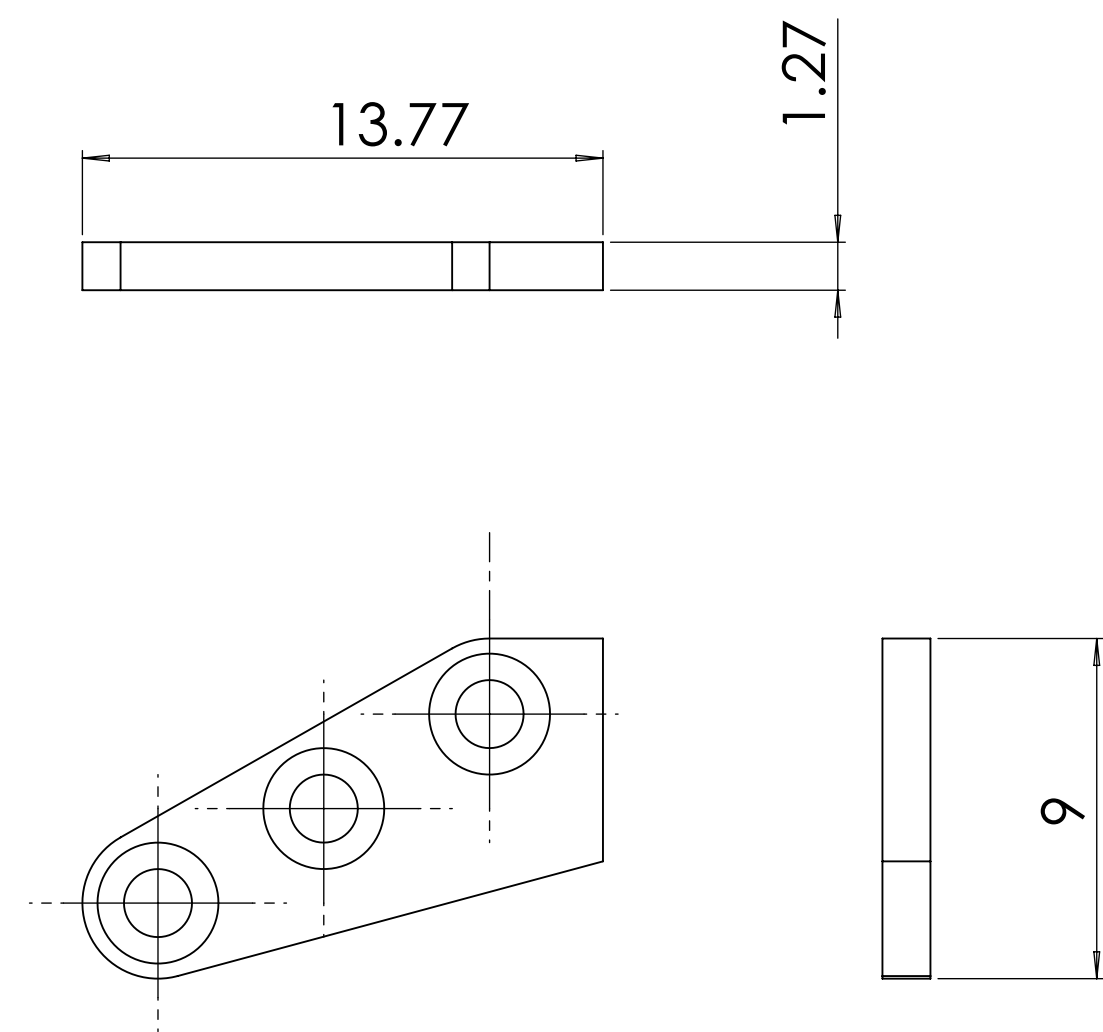


Kingsland - Rubber temple bumper  
Silicone Rubber

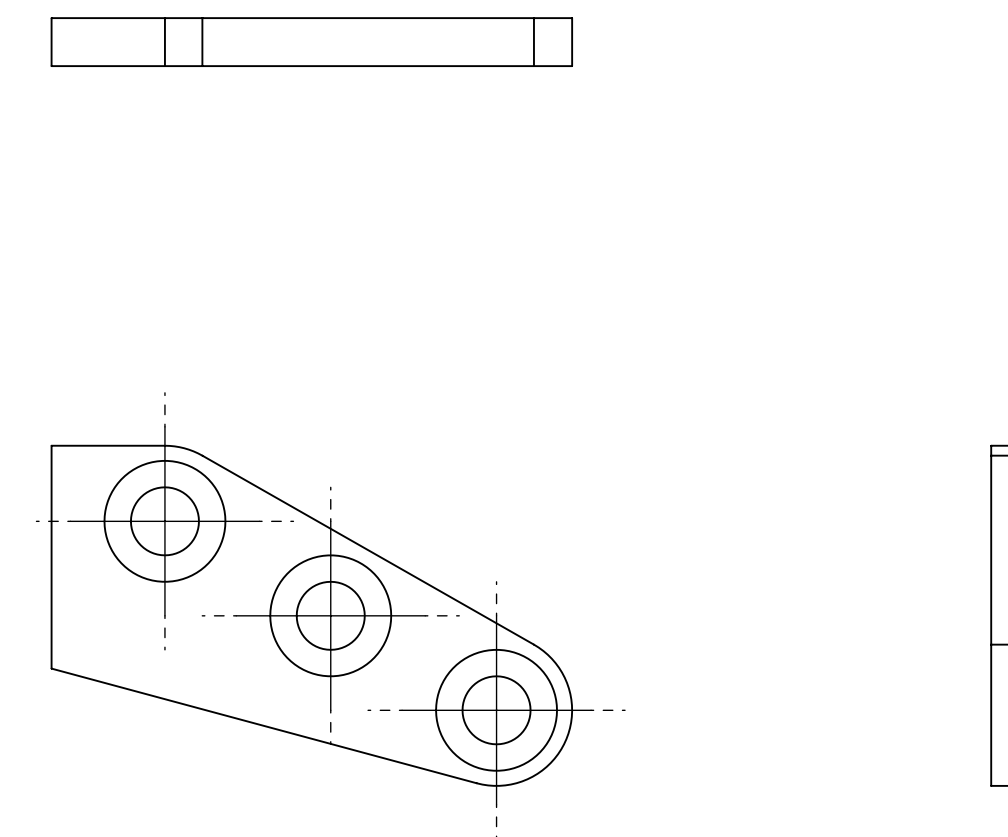


Kingsland - Nose Pad Screw m1.4 x 0.3 x 3mm  
Stainless Steel

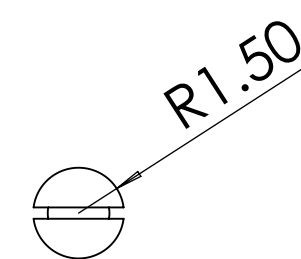
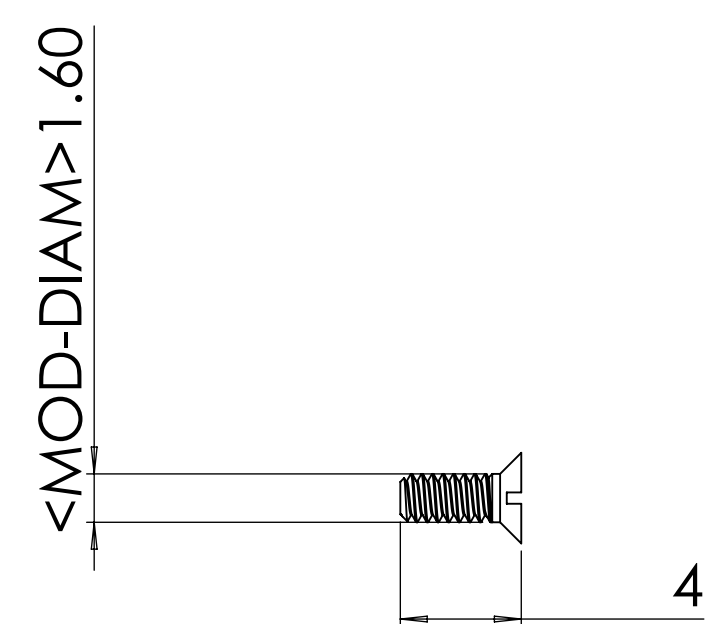




Kingsland - Left Temple end connection plate

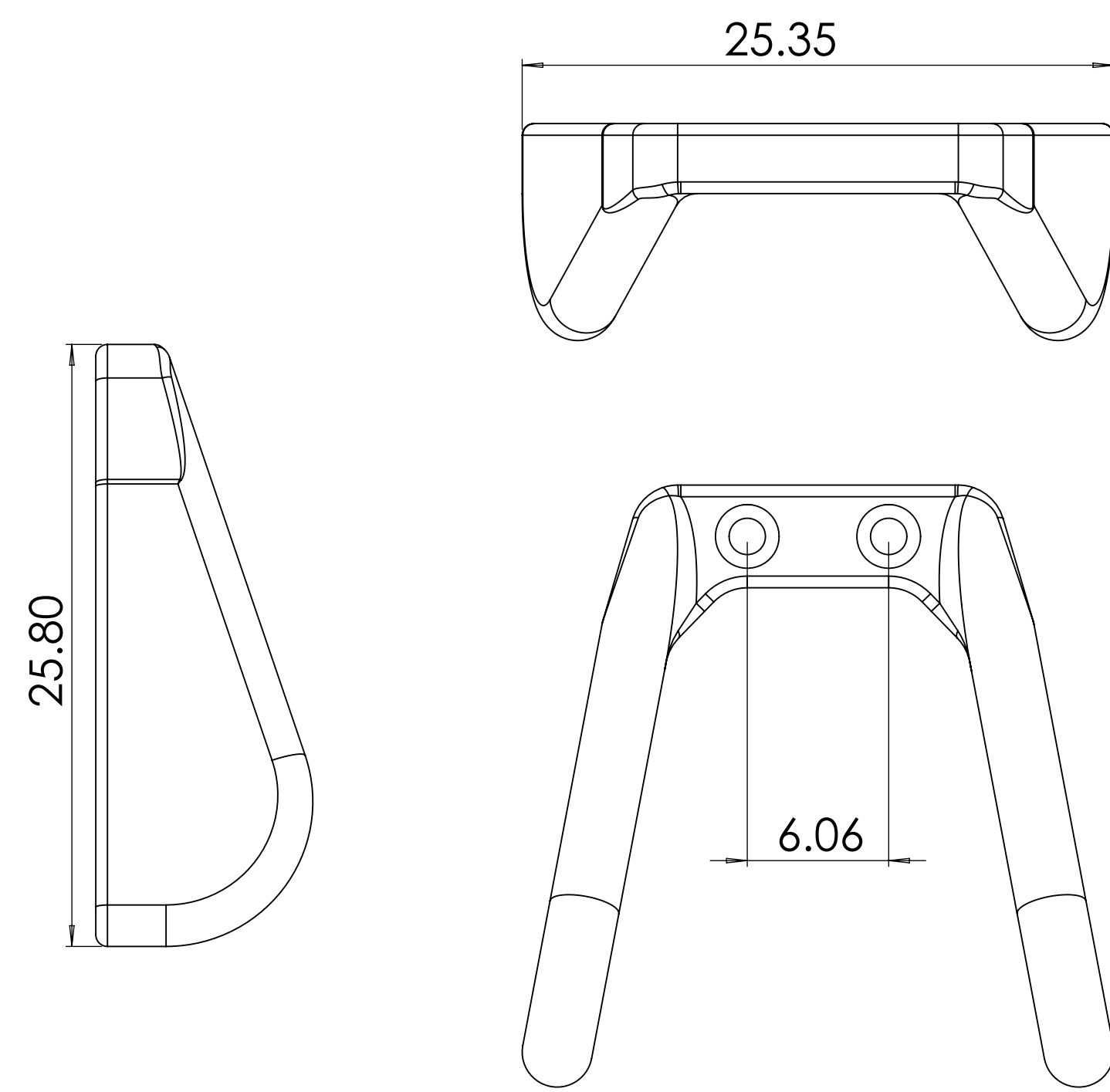


Kingsland - Right Temple end connection plate



CD spiral finish

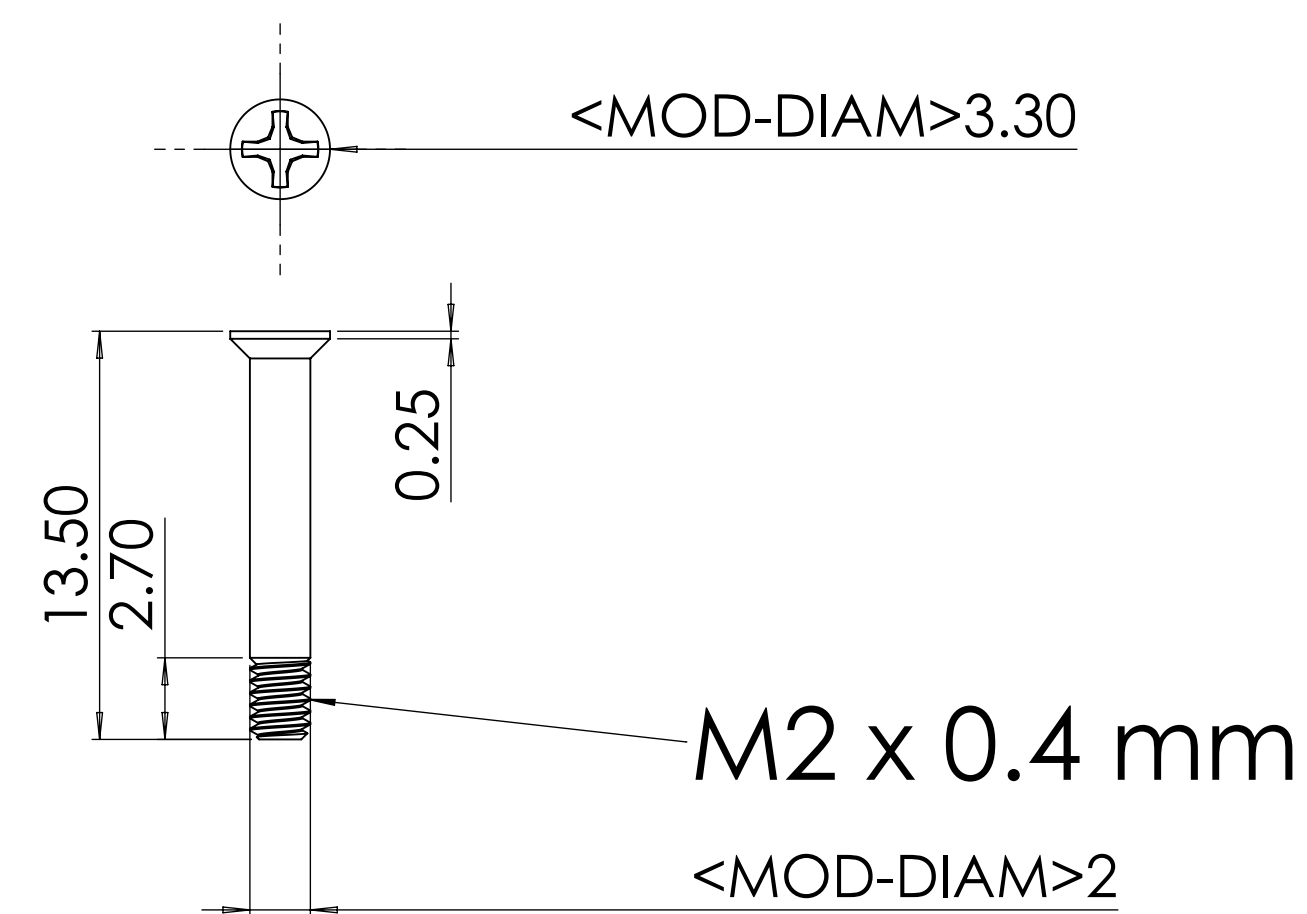
FLAT HEAD SLOTTED MACHINE SCREW m1.6 x 4



Kingsland - Nose Pad

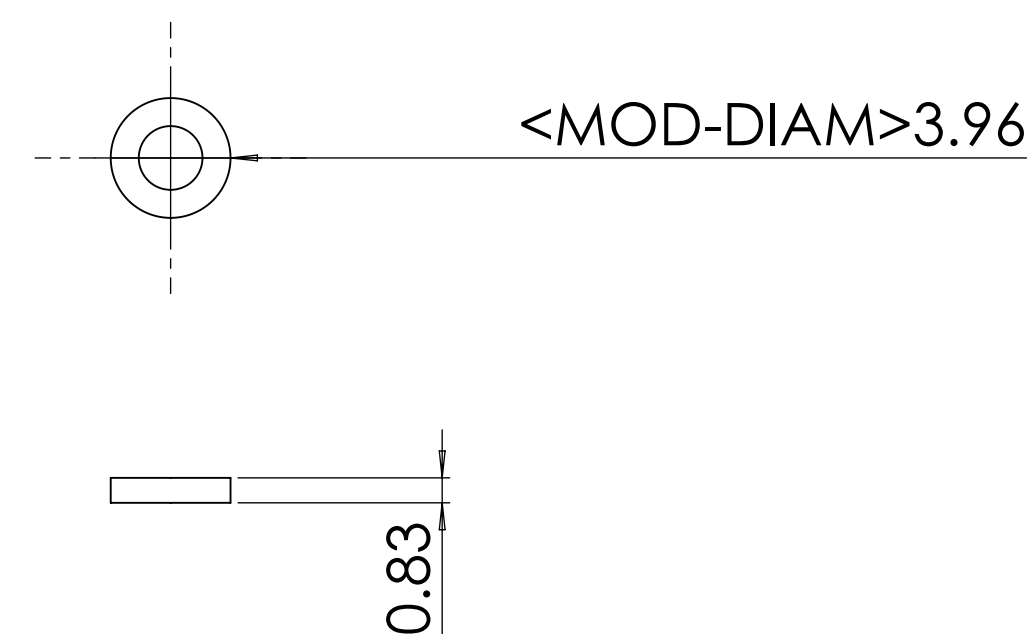
Available from Glasses part supplier  
Please find supplier and include in Quote

Size 17 x 25



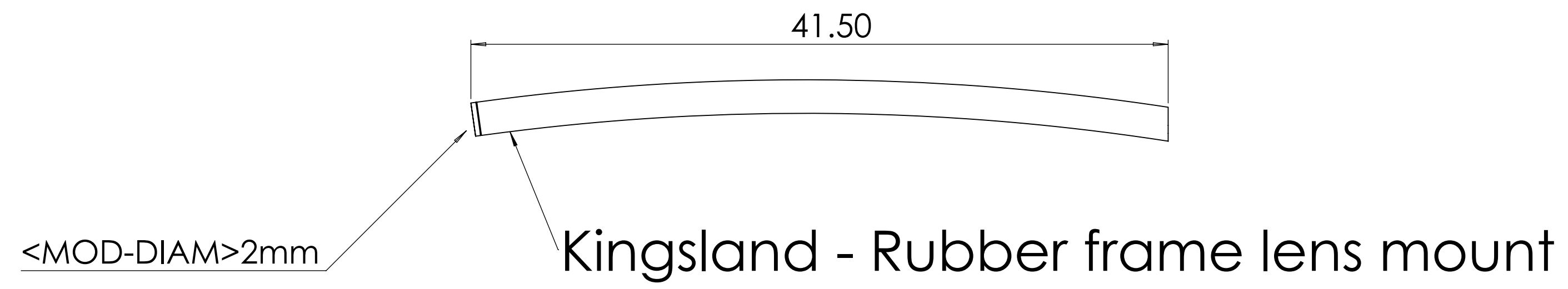
Kingsland - Temple screw m2 x 0.4mm

Stainless Steel  
Supplied by EXOvault

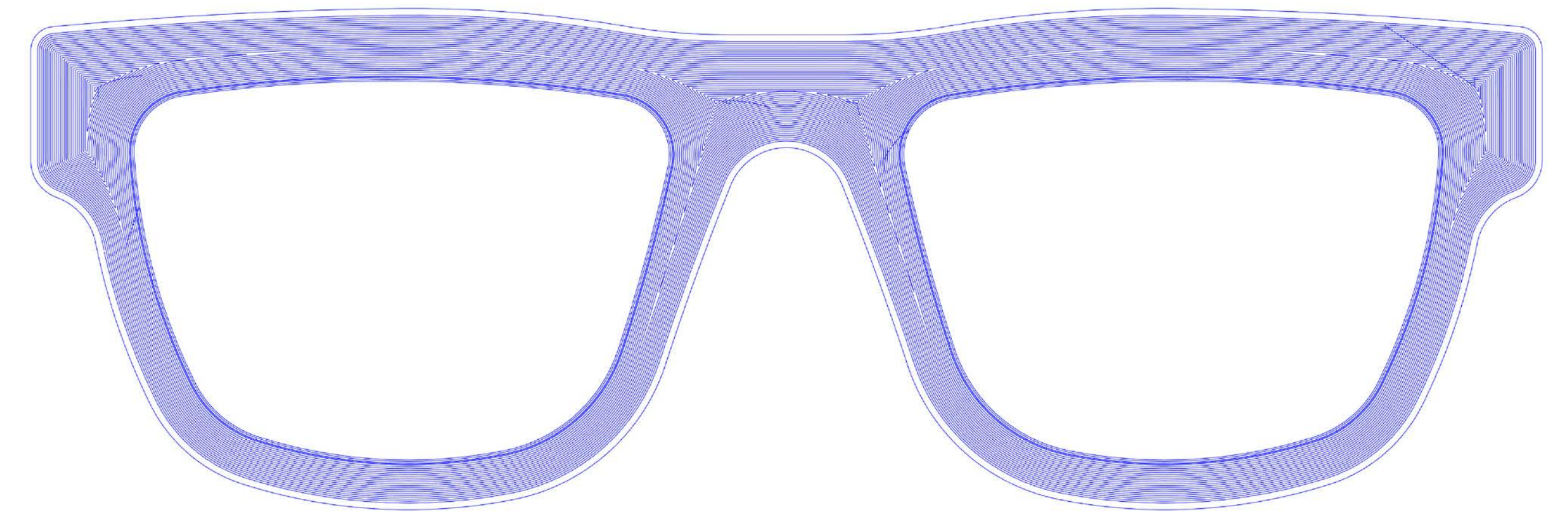


Kingsland - Nylon washer 5610-221-325

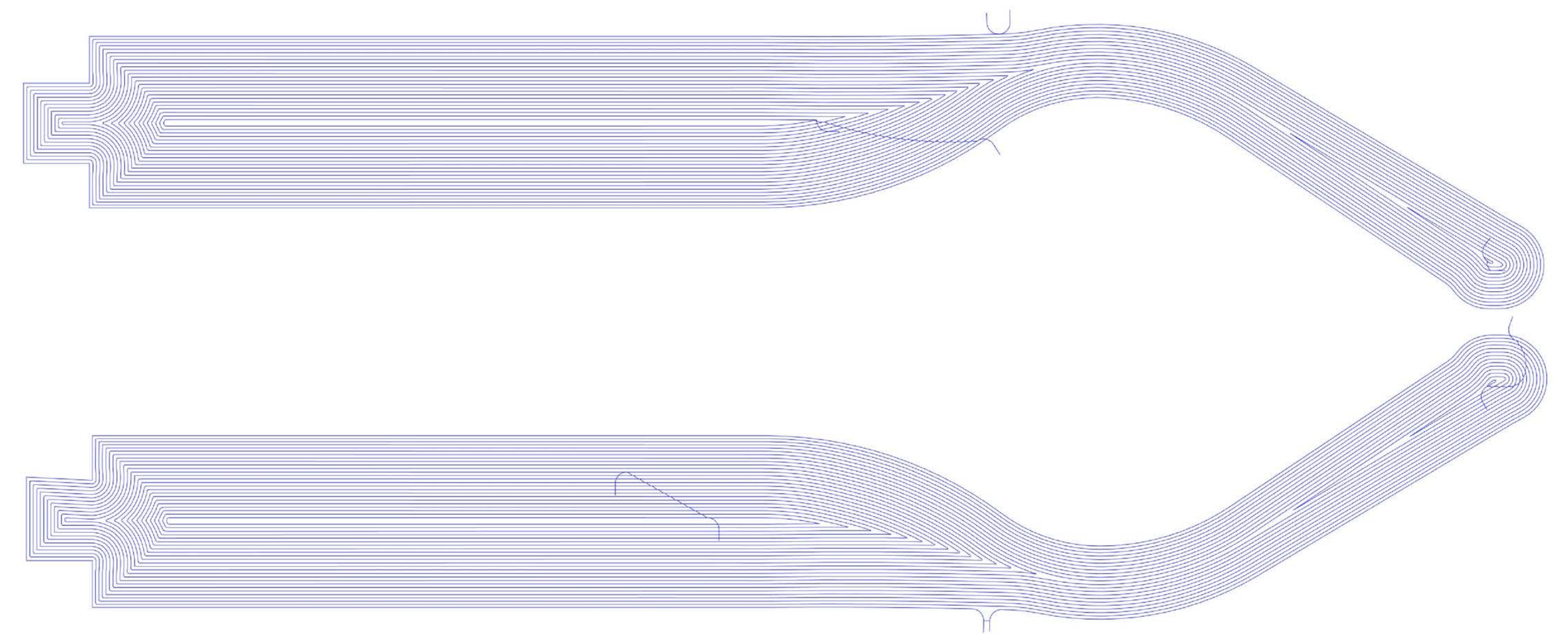
Nylon  
Supplied by EXOvault



Cut to length from silicon rubber cord stock  
Black rubber for black frames



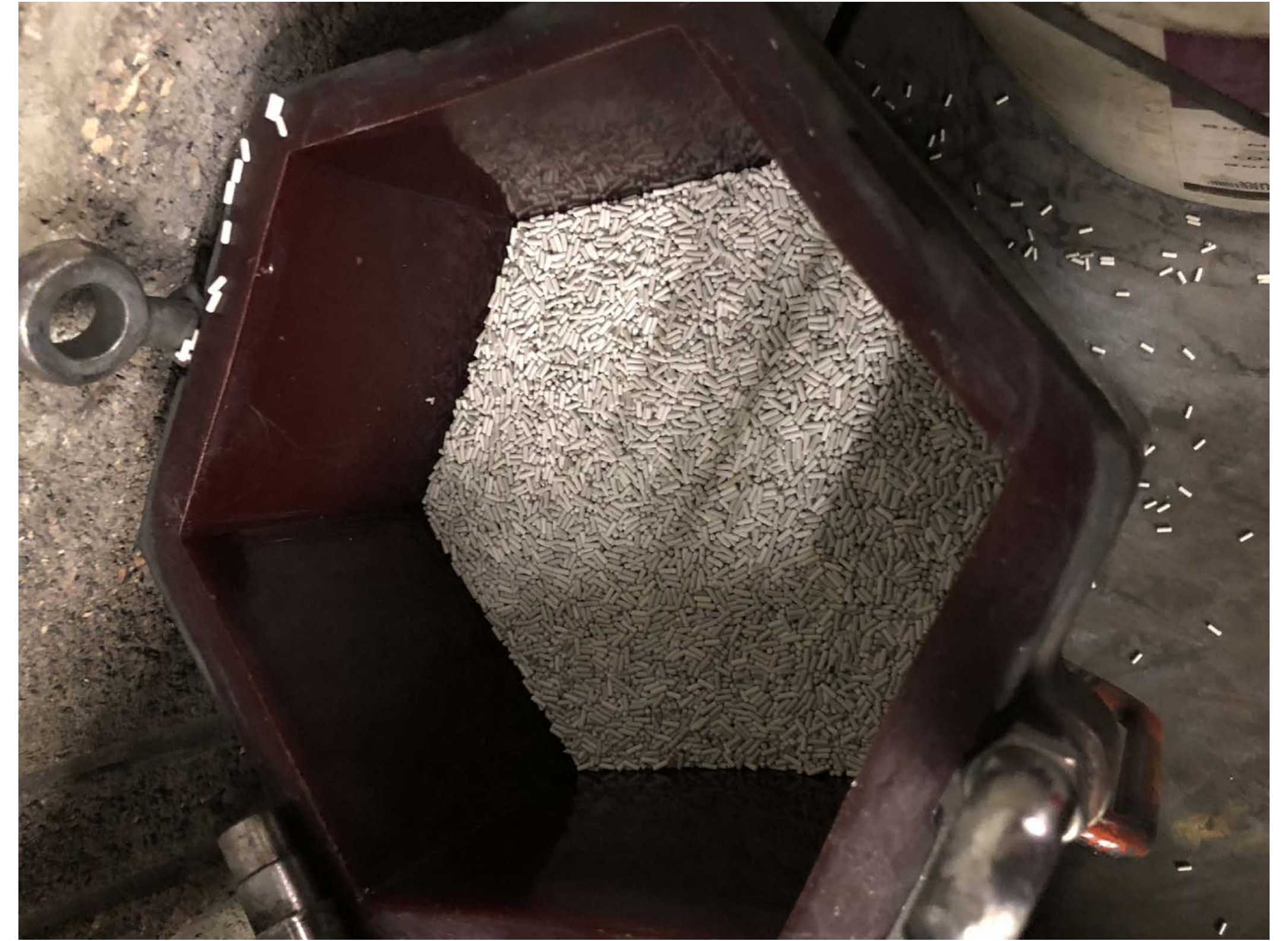
Sample of Gcode cut path



Sample of Gcode cut path

Parts are to be 3d surfaced. The tool marks are too be left.  
The tool marks should be very even and symmetrical.

Please note how the tool marks follow the outside shape of the glasses.



We recommend barrel finishing to achieve soft edges and bright polish.  
We used a 1mm x 6mm ceramic pill and polishing compound.



Anodized Silver



Hard Anodized Black



Heavy Gold Plate 3 Microns



Heavy Rhodium Plate 1 Micron

Please quote highest quality Coatings

Kingsland